

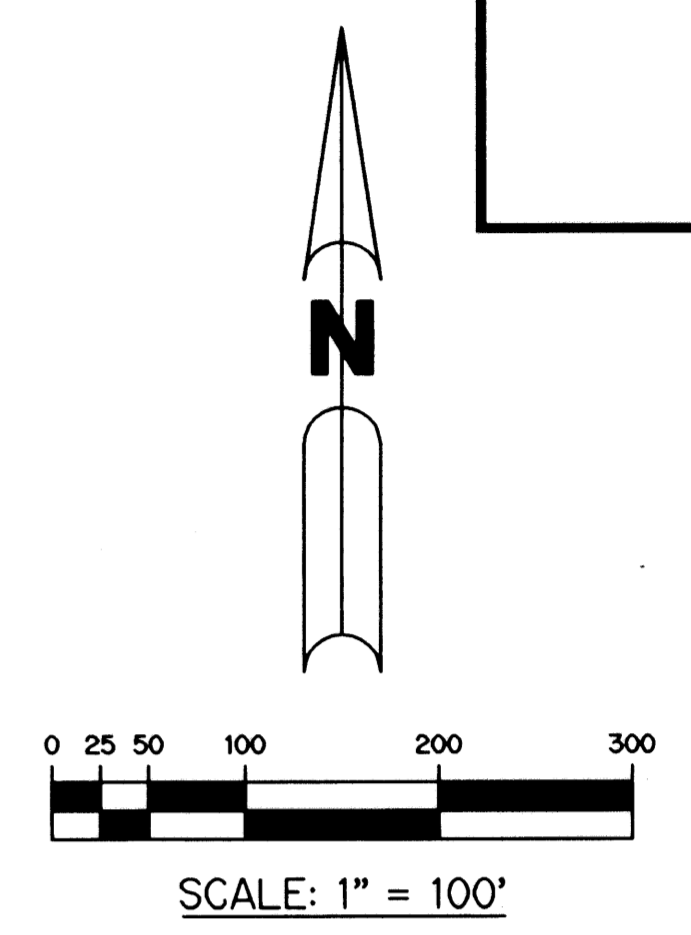
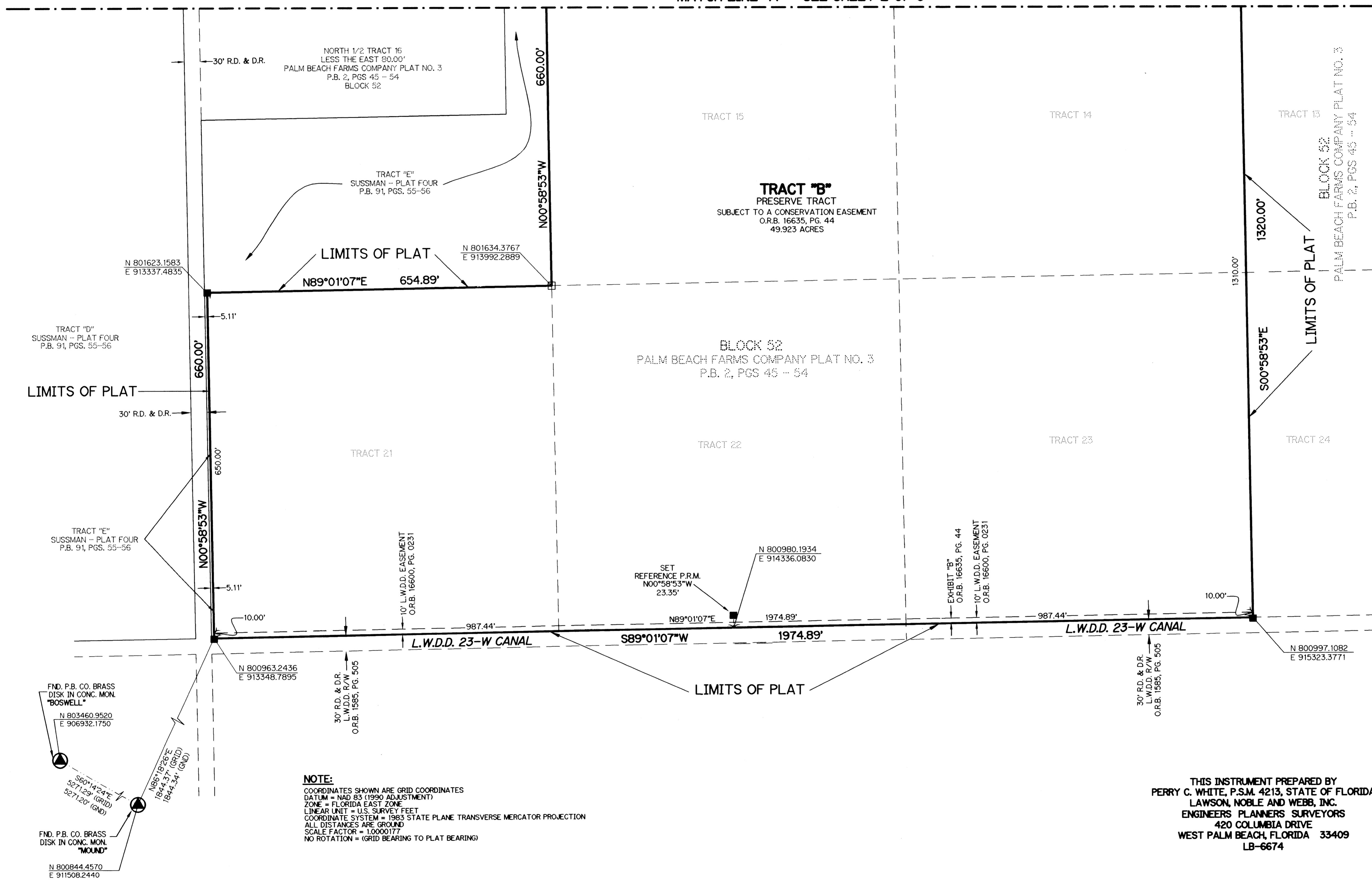
CANYON LAKES (A.K.A. FOGG NORTH) PLANNED UNIT DEVELOPMENT
CANYON LAKES PRESERVE AREA NO. 4
 BEING A REPLAT OF A PORTION OF TRACTS 2, 12, 21 AND ALL OF
 TRACTS 10, 11, 14, 15, 22 AND 23, BLOCK 52, PALM BEACH FARMS COMPANY PLAT
 NO. 3, ACCORDING TO THE PLAT THEREOF, AS RECORDED IN PLAT BOOK 2, PAGES 45
 THROUGH 54, OF THE PUBLIC RECORDS, PALM BEACH COUNTY, FLORIDA, ALL
 LYING WITHIN SECTION 24, TOWNSHIP 45 SOUTH, RANGE 41 SOUTH,
 PALM BEACH COUNTY, FLORIDA

SHEET 3 OF 3

MARCH, 2004

172

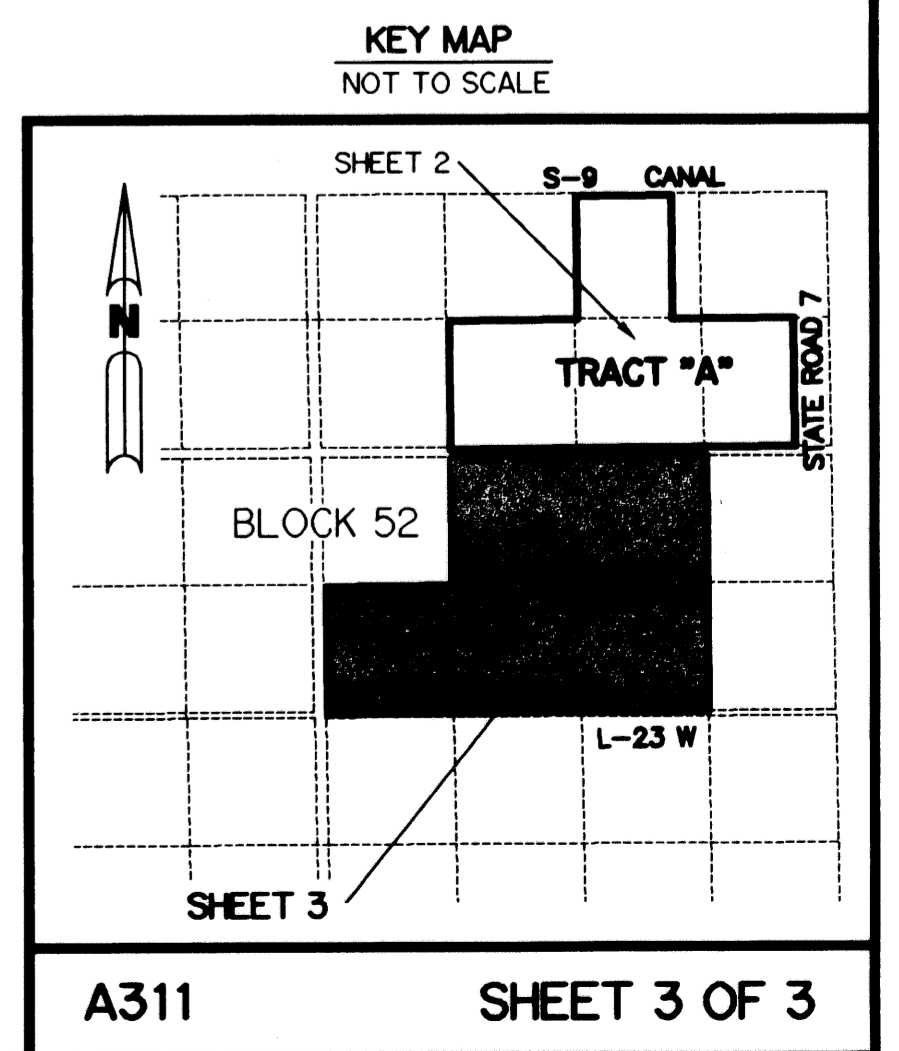
MATCH LINE "A" - SEE SHEET 2 OF 3



- LEGEND:**
- - FND PERMANENT REFERENCE MONUMENT, L.B. #6674
 - - SET PERMANENT REFERENCE MONUMENT, L.B. #6674
 - - SET PARKER KALON NAIL AND DISC, PERMANENT REF
 - Δ - DELTA ANGLE
 - AC - ACRES
 - B.E. - BUFFER EASEMENT
 - CB - CHORD BEARING
 - CH - CHORD
 - C - CENTERLINE
 - D.B. - DEED BOOK
 - D.E. - DRAINAGE EASEMENT
 - L - ARC LENGTH
 - L.A.E. - LIMITED ACCESS EASEMENT
 - L.M.A.E. - LAKE MAINTENANCE ACCESS EASEMENT
 - L.M.E. - LAKE MAINTENANCE EASEMENT
 - L.M.E. - LAKE MAINTENANCE EASEMENT
 - L.S.E. - LIFT STATION EASEMENT
 - N.R. - NOT RADIAL
 - N.T.S. - NOT TO SCALE
 - O.R.B. - OFFICIAL RECORD BOOK
 - P.B. - PLAT BOOK
 - P.B.C.U.E. - PALM BEACH COUNTY UTILITY EASEMENT
 - P.C. - POINT OF CURVATURE
 - P.I. - POINT OF INTERSECTION
 - PGS. - PAGES
 - P.S.M. - PROFESSIONAL SURVEYOR AND MAPPER
 - R - RADIUS
 - RAD. - RADIAL
 - R/W - RIGHT-OF-WAY
 - S.F. - SQUARE FEET
 - S.T. - SURVEY TIE
 - U.E. - UTILITY EASEMENT
 - P.O.B. - POINT OF BEGINNING
 - P.O.C. - POINT OF COMMENCEMENT
 - N 737648.0171
E 905258.2326 - DENOTES STATE PLANE COORDINATES

NOTE:
 COORDINATES SHOWN ARE GRID COORDINATES
 DATUM = NAD 83 (1990 ADJUSTMENT)
 ZONE = FLORIDA EAST ZONE
 LINEAR UNIT = U.S. SURVEY FEET
 COORDINATE SYSTEM = 1983 STATE PLANE TRANSVERSE MERCATOR PROJECTION
 ALL DISTANCES ARE GROUND
 SCALE FACTOR = 1.0000177
 NO ROTATION = (GRID BEARING TO PLAT BEARING)

THIS INSTRUMENT PREPARED BY
 PERRY C. WHITE, P.S.M. 4213, STATE OF FLORIDA
 LAWSON, NOBLE AND WEBB, INC.
 ENGINEERS PLANNERS SURVEYORS
 420 COLUMBIA DRIVE
 WEST PALM BEACH, FLORIDA 33409
 LB-6674



SUBDIVISION CANYON LAKES PRESERVE AREA No. 4
 PAGE 172
 FLOOD MAP # 050 B
 ZONING PDD
 PLAT # 005
 ZIP CODE 33437
 TAZ 742
 FUD NAME FOGG NORTH